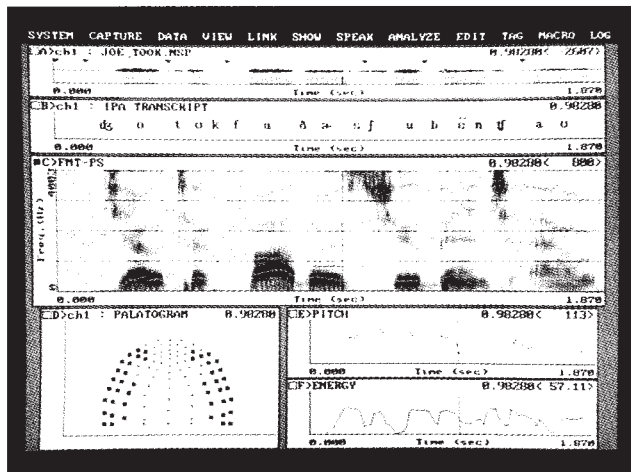
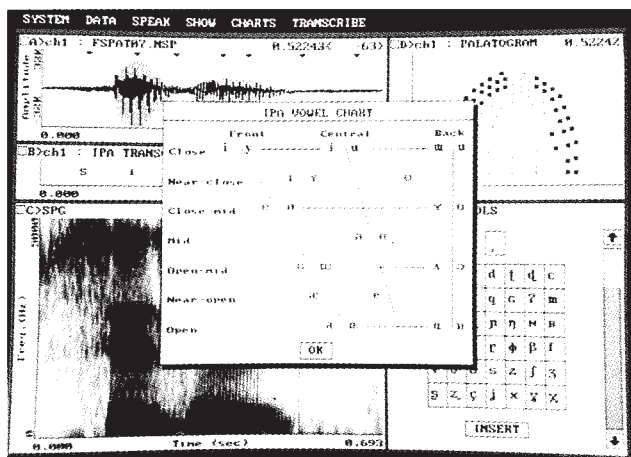


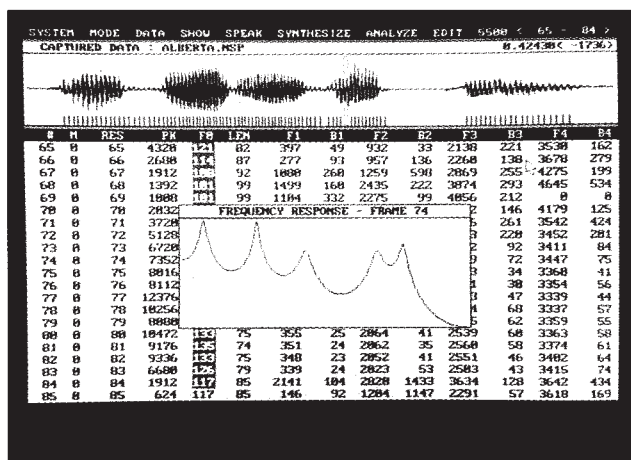
# CSL offers the right tools for acoustic phoneticians.



The CSL contains extensive speech analysis capabilities. Files acquired with Kay's Palatometer allow physiological data to be compared to acoustic results.



The IPA Transcription Tutorial is presented in a multimedia environment. When students are unsure of proper transcription, a vowel or consonant chart can be displayed which speaks each phoneme and provides a spectrographic display with a click of the mouse.



The LPC numerical editor allows users to mark columns of data (e.g., specific formants or  $F_0$  values) for quick, precise editing. A variety of functions is available.

CSL™/Computerized Speech Lab offers extensive analysis formats, editing functions, and other core capabilities that make it the instrument of choice for acoustic phoneticians. The CSL is a completely integrated system. It includes both hardware and software and works on a host PC personal computer. Some exciting features and options include:

## Features

- Dual-channel data acquisition with CD-quality audio playback fidelity (four-channel option available)
- Extensive analysis formats including spectrograms, waveforms, LPC (slices and formant history), pitch, energy, and more
- On-screen IPA transcription tool with all 196 characters including diacritics
- Integration with Palatometer linguapalatal contact patterns to link phoneme production and acoustic results
- Extensive commands for editing, digital filtering, warping, splicing, mixing, and appending speech samples for precise manipulation

## Programs for Research and Teaching

- Speech synthesis (LPC-derived, residual-driven, and pitch-synchronous) with both graphic and numerical editing of formant frequencies, bandwidths, and fundamental frequency
- Multimedia IPA teaching software with each spoken phoneme analyzed spectrographically and with built-in exercises for student practice
- Phonetic database offers 82 MB of speech sampled from 25 languages with over 1,870 samples on CD-ROM
- Real-time options including pitch, spectrograms, and LPC-based spectra; ideal for classroom demonstrations or lab exercises

Kay offers competitive package pricing and excellent support for the CSL. Call **1-800-289-5297** for more information.

# KAY

Kay Elemetrics Corp.  
2 Bridgewater Lane  
Lincoln Park, NJ 07035-1488 USA  
Tel: 1-800-289-5297 (In USA and Canada),  
(973) 628-6200 • FAX: (973) 628-6363