

STFT SPECTRAL LOSS FOR TRAINING A NEURAL SPEECH WAVEFORM MODEL

Shinji Takaki¹, Toru Nakashika², Xin Wang¹, Junichi Yamagishi^{1,3}

¹National Institute of Informatics, Japan ²The University of Electro-Communications, Japan

³The University of Edinburgh, UK

takaki@nii.ac.jp, nakashika@uec.ac.jp, wangxin@nii.ac.jp, jyamagis@nii.ac.jp

ABSTRACT

This paper proposes a new loss using short-time Fourier transform (STFT) spectra for the aim of training a high-performance neural speech waveform model that predicts raw continuous speech waveform samples directly. Not only amplitude spectra but also phase spectra obtained from generated speech waveforms are used to calculate the proposed loss. We also mathematically show that training of the waveform model on the basis of the proposed loss can be interpreted as maximum likelihood training that assumes the amplitude and phase spectra of generated speech waveforms following Gaussian and von Mises distributions, respectively. Furthermore, this paper presents a simple network architecture as the speech waveform model, which is composed of uni-directional long short-term memories (LSTMs) and an auto-regressive structure. Experimental results showed that the proposed neural model synthesized high-quality speech waveforms.

Index Terms— speech synthesis, neural waveform modeling, WaveNet

1. INTRODUCTION

Research on speech waveform modeling is advancing because of neural networks [1, 2]. The WaveNet [2] directly models waveform signals and demonstrates excellent performance. The WaveNet can also be used as a vocoder, which converts acoustic features, e.g., a mel-spectrogram sequence, into speech waveform signals [3, 4]. Such a neural speech waveform model used as a vocoder can be integrated into a text-to-speech synthesis system, and it has been shown that it outperforms conventional signal-processing-based vocoders [5]. Neural speech waveform models will be essential components for many speech synthesis applications.

There have been several investigations of neural speech waveform models about output distribution and training criteria. A categorical distribution for discrete waveform samples and cross entropy are introduced to train the original WaveNet [2]. The mixture of logistic distribution and a discretized logistic mixture likelihood are also used to train the improved WaveNet [6]. The parallel-WaveNet [6] and the ClariNet [7] use a distilling approach to transfer the knowledge of auto-regressive (AR) WaveNet to a simpler non-AR student model. The distilling approach typically introduces an amplitude spectral loss as the auxiliary loss in the distillation in order to avoid generating devoiced/whisper voices. We believe that losses using short-time Fourier transform (STFT) spectra can be

used beyond the distillation, and they can be used for training speech waveform models themselves. Because it is known that (complex-valued) STFT spectra represent speech characteristics well, the spectra would be useful for efficient training of neural waveform models.

In this paper, we propose a new loss using the STFT spectra for the aim of training a high-performance neural speech waveform model that predicts raw continuous speech waveform samples directly (rather than the auxiliary loss used for the distillation process). Because not only amplitude spectra but also phase spectra represent speech characteristics [8], the proposed loss considers both amplitude and phase spectral losses obtained from generated speech waveforms. Also, we give interpretation based on probability distributions about training using the proposed loss. This interpretation provides us better understanding of the proposed method and its relationship to various spectral losses such as Kullback-Leibler divergence or Itakura-Saito divergence [9, 10]. This paper also presents a simple network architecture as a speech waveform model. The proposed simple network is composed of uni-directional long short-term memories (LSTMs) and an auto-regressive structure unlike the WaveNet, which uses a relatively complicated convolutional neural network (CNN) with stacked dilated convolution.

The rest of this paper is organized as follows. Section 2 of this paper presents a neural speech waveform and the proposed loss to train it. Section 3 describes the proposed network architecture. Experimental results are presented in Section 4. We conclude in Section 5 with a summary and mention of our future work.

2. THE PROPOSED LOSS FOR A WAVEFORM MODEL

A neural speech waveform model targeted in this paper is as follows.

$$\mathbf{y} = f^{(\lambda)}(\mathbf{x}), \quad (1)$$

where, $\mathbf{y} \in \mathbb{R}^M$, $\mathbf{x} = [\mathbf{x}_1^\top, \dots, \mathbf{x}_I^\top]^\top$, $\mathbf{x}_i \in \mathbb{R}^D$, and λ represent a neural network's outputs (i.e., speech waveform samples), an input sequence (e.g., a log-mel spectrogram), an input feature, and parameters of a neural network, respectively. A sample index, a frame index, and the dimension of an input feature are represented by m , i , and D , respectively. Back-propagation is generally used to get optimal parameters λ for a loss function. Because training the model is a regression task, a simple loss function is a square error between natural speech waveform samples and a neural network's outputs \mathbf{y} as follows.

$$E^{(wav)} = \sum_m (\hat{y}_m - y_m)^2, \quad (2)$$

where, $\hat{\cdot}$ denotes natural data. However, this criterion does not consider any information related to frequency characteristics of speech.

This work was partially supported by JST CREST Grant Number JP-MJCR18A6, Japan and by MEXT KAKENHI Grant Numbers (16H06302, 16K16096, 17H04687, 18H04120, 18H04112, 18KT0051, 18K18069), Japan.

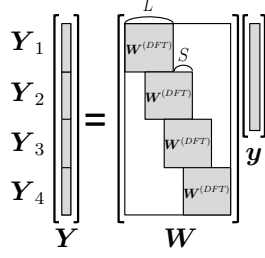


Fig. 1. STFT complex spectra calculated by using a matrix \mathbf{W} . Here, $\mathbf{W} \in \mathbb{C}^{LT \times M}$ represents an STFT operation. L , S , and $\mathbf{W}^{(DFT)}$ denote frame length, frame shift, and a discrete Fourier transform (DFT) matrix. White parts in the matrix \mathbf{W} represent 0.

In this paper, we propose loss functions using STFT spectra to effectively train a neural speech waveform instead of using the above square error as a loss function.

2.1. STFT spectra

In this section, we describe representations of amplitude and phase spectra used in the proposed loss. As shown in Fig. 1, an STFT complex spectral sequence, $\mathbf{Y} = [\mathbf{Y}_1^\top, \dots, \mathbf{Y}_T^\top]^\top$, is represented by using a matrix \mathbf{W} as follows.

$$\mathbf{Y} = \mathbf{W}\mathbf{y}, \quad (3)$$

where, t and \mathbf{W} represent a frame index and a matrix which performs STFT operation, respectively. Also, a complex-valued, amplitude and phase spectra of frequency bin n at frame t are represented as follows.

$$Y_{t,n} = \mathbf{W}_{t,n}\mathbf{y}, \quad (4)$$

$$A_{t,n} = |Y_{t,n}| = (\mathbf{y}^\top \mathbf{W}_{t,n}^H \mathbf{W}_{t,n} \mathbf{y})^{\frac{1}{2}}, \quad (5)$$

$$\begin{aligned} \exp(i\theta_{t,n}) &= \exp(i\angle Y_{t,n}) \\ &= \frac{Y_{t,n}}{A_{t,n}} \\ &= \frac{\mathbf{W}_{t,n}\mathbf{y}}{(\mathbf{y}^\top \mathbf{W}_{t,n}^H \mathbf{W}_{t,n} \mathbf{y})^{\frac{1}{2}}}, \end{aligned} \quad (6)$$

where, $A_{t,n}$, $\theta_{t,n}$, $\mathbf{W}_{t,n}$, \cdot^H , and i represent an amplitude spectrum, a phase spectrum, a row vector of \mathbf{W} , Hermitian transpose, and imaginary unit, respectively. In this paper, Euler's formula is applied to a phase spectrum instead of directly using a phase spectrum. We use amplitude and phase spectra as shown in Eq. (5) and Eq. (6) for model training.

2.2. Amplitude spectral loss

A loss function for an amplitude spectrum of frequency bin n at frame t is defined as a square error.

$$E_{t,n}^{(amp)} = \frac{1}{2}(\hat{A}_{t,n} - A_{t,n})^2 \quad (7)$$

$$= \frac{1}{2}(\hat{A}_{t,n} - (\mathbf{y}^\top \mathbf{W}_{t,n}^H \mathbf{W}_{t,n} \mathbf{y})^{\frac{1}{2}})^2. \quad (8)$$

We then obtain a partial derivative of Eq. (7) w.r.t. \mathbf{y} as

$$\frac{\partial E_{t,n}^{(amp)}}{\partial \mathbf{y}} = (A_{t,n} - \hat{A}_{t,n}) \mathcal{R} \left(\exp(i\theta_{t,n}) \mathbf{W}_{t,n}^H \right), \quad (9)$$

where, $\mathcal{R}(z)$ is a real part of a complex value z . Here the Wirtinger derivative is used to calculate the partial derivative in the complex domain. $\sum_n \partial E_{t,n}^{(amp)} / \partial \mathbf{y}$ can be efficiently calculated by using an inverse FFT operation.

2.3. Phase spectral loss

A phase spectrum is a periodic variable with a period of 2π . A loss function for a phase spectrum of frequency bin n at frame t is defined as follows to consider this periodic property.

$$E_{t,n}^{(ph)} = \frac{1}{2} \left| 1 - \exp(i(\hat{\theta}_{t,n} - \theta_{t,n})) \right|^2 \quad (10)$$

$$\begin{aligned} &= 1 - \frac{1}{2} \left(\frac{\hat{Y}_{t,n}}{\hat{A}_{t,n}} \frac{(\mathbf{y}^\top \mathbf{W}_{t,n}^H \mathbf{W}_{t,n} \mathbf{y})^{\frac{1}{2}}}{\mathbf{W}_{t,n} \mathbf{y}} \right. \\ &\quad \left. + \frac{\bar{\hat{Y}}_{t,n}}{\hat{A}_{t,n}} \frac{(\mathbf{y}^\top \mathbf{W}_{t,n}^H \mathbf{W}_{t,n} \mathbf{y})^{\frac{1}{2}}}{\bar{\mathbf{W}}_{t,n} \mathbf{y}} \right), \end{aligned} \quad (11)$$

where, $\bar{\cdot}$ is the complex conjugate. We obtain a partial derivative of Eq. (10) w.r.t. \mathbf{y} as

$$\frac{\partial E_{t,n}^{(ph)}}{\partial \mathbf{y}} = \sin(\hat{\theta}_{t,n} - \theta_{t,n}) \mathcal{I} \left(\frac{1}{\bar{\mathbf{Y}}_{t,n}} \mathbf{W}_{t,n}^H \right), \quad (12)$$

where, $\mathcal{I}(z)$ denotes an imaginary part of a complex value z . $\sum_n \partial E_{t,n}^{(ph)} / \partial \mathbf{y}$ can be also efficiently calculated by using an inverse FFT operation.

2.4. Loss function for model training

A partial derivative of the amplitude loss function (Eq. (9)) includes a phase spectrum of outputs (i.e., $\theta_{t,n}$), and that of the phase loss function (Eq. (12)) includes an amplitude spectrum of outputs (i.e., $A_{t,n}$). $\bar{\mathbf{Y}}$ can be rewritten as $A_{t,n} \exp(i(-\theta_{t,n}))$. Thus, the amplitude and phase losses are related to each other through a neural network's outputs during model training, although each loss function focuses on only amplitude or phase spectra.

In this paper, a combination of amplitude and phase spectral loss functions is used for training a neural speech waveform model.

$$E^{(sp)} = \sum_{t,n} (E_{t,n}^{(amp)} + \alpha_{t,n} E_{t,n}^{(ph)}), \quad (13)$$

where, $\alpha_{t,n}$ denotes a weight parameter. We use three types of $\alpha_{t,n}$ for training a neural speech waveform model.

$\alpha_{t,n} = 0$: Using only the amplitude spectral loss function for model training.

$\alpha_{t,n} = 1$: Using a simple combination of the amplitude and phase spectral loss functions.

$\alpha_{t,n} = v_t$: Here, v_t represents a voiced/unvoiced flag (1:voiced, 0:unvoiced). In this case, we assume that phase spectra in unvoiced parts are random values, and hence the phase spectral loss computed in unvoiced parts is omitted from model training.

2.5. Interpretation based on probability distributions

First, Eq. (7) and Eq. (10) can be rewritten as follows.

$$E_{t,n}^{(amp)} = \log P_g(\hat{A}_{t,n} | \hat{A}_{t,n}, 1) - \log P_g(\hat{A}_{t,n} | A_{t,n}, 1) \quad (14)$$

$$\begin{aligned} E_{t,n}^{(ph)} &= 1 - \cos(\hat{\theta}_{t,n} - \theta_{t,n}) \\ &= \log P_{vm}(\hat{\theta}_{t,n} | \hat{\theta}_{t,n}, 1) - \log P_{vm}(\hat{\theta}_{t,n} | \theta_{t,n}, 1), \end{aligned} \quad (15)$$

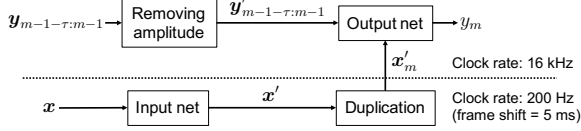


Fig. 2. Overview of the proposed network.

where, $P_g(\cdot)$ and $P_{vm}(\cdot)$ are probability density functions of the Gaussian distribution and the von Mises distribution.

$$P_g(x | \mu, \sigma^2) = \frac{1}{\sqrt{2\pi\sigma^2}} \exp\left(-\frac{(x - \mu)^2}{2\sigma^2}\right) \quad (16)$$

$$P_{vm}(x | \mu, \beta) = \frac{\exp(\beta \cos(x - \mu))}{2\pi I_0(\beta)} \quad (17)$$

$I_0(\beta)$ is the modified Bessel function of the first kind of order 0.

From relationships of Eqs. (7), (10), (14), and (15), minimization of Eq. (13) is equivalent to that of the log negative likelihood L below.

$$L = -\log \prod_{t,n} P_g(\hat{A}_{t,n} | A_{t,n}, 1) P_{vm}^{\alpha_{t,n}}(\hat{\theta}_{t,n} | \theta_{t,n}, 1). \quad (18)$$

In other words, the amplitude and phase spectra of a neural network's outputs represent mean parameters of the Gaussian distribution and the von Mises distribution, respectively. Thus, optimizing a neural network on the basis of the proposed loss function is the maximum likelihood estimation that uses the above probabilistic functions for the speech waveform model.

In this initial investigation we used the Gaussian distribution and the von Mises distribution to define loss functions for amplitude and phase spectra. But we can easily define other meaningful spectral losses by replacing the distributions with other distributions. For instance, if we use Poisson or exponential distribution instead of Gaussian distribution, we can define the Kullback-Leibler divergence or Itakura-Saito divergence as an amplitude spectral loss [9, 10]. Also, we can easily define a different loss function for phase spectra by replacing the von Mises distribution with other distributions such as the generalized cardioid distribution [11], the generalized version of the von Mises distribution.

3. NETWORK ARCHITECTURE

Fig. 2 shows an overview of the proposed network. The processing below the dotted line in Fig. 2 is the same as that used in the WaveNet vocoder [12], in which input features are converted to hidden representations through an input network, and then they are duplicated to adjust time resolution. The processing above the dotted line is conceptually the same as that used in the WaveNet vocoder, in which feedback samples and hidden representations are fed back into an output network with an auto-regressive structure to output the next speech waveform sample. However, the following are two remarkable differences of the proposed network¹.

- 1: An output network is simply based on uni-directional LSTMs. CNNs with stacked dilated convolution are not used in our method.
- 2: Spectral amplitude information is removed from feedback waveform samples. The output network with an auto-regressive structure forces natural waveform samples back to the network during teacher-forced training [14]. A network composed of uni-directional LSTMs

¹We also investigated a further improved network without the auto-regressive structure in order to significantly reduce the computational cost at the synthesis phase. See our next paper [13].

tends to rely on the feedback waveform samples while ignoring the input features if natural waveform samples are directly fed into it. To solve this problem, feedback waveform samples are converted as follows.

$$y'_{m-1-\tau:m-1} = \mathcal{F}^{-1} \left(\frac{\mathcal{F}(y_{m-1-\tau:m-1})}{|\mathcal{F}(y_{m-1-\tau:m-1})|} \right), \quad (19)$$

where, \mathcal{F} , \mathcal{F}^{-1} , the fraction bar, and $|\cdot|$ denote FFT operation, inverse FFT operation, element-wise division, and the element-wise absolute, respectively. Speech waveform samples, whose amplitude spectra are 1, are obtained through the conversion. This conversion can be regarded as data dropout [15], although amplitude spectra are dropped and are replaced with 1 instead of 0.

4. EXPERIMENT

4.1. Experimental conditions

The proposed neural speech waveform models were evaluated as a vocoder². We used a female speaker (slt) from the CMU-ARCTIC database [16]. 1,032 and 50 utterances were used as training and test sets, respectively. Their speech waveforms have a sampling frequency of 16 kHz and a 16-bit PCM format.

As an input feature, an 80-dim log-mel spectrogram was used. Frame shift, frame length, and FFT size were 80, 400, and 512, respectively. Log-mel spectrograms and waveform samples were normalized to have 0 mean and 1 variance for training the proposed speech waveform model.

Input features, i.e., the log-mel spectrogram sequence, were first converted into hidden representations through an input network composed of an 80-unit bi-directional LSTM and a CNN with 80 filters whose size is 5 (time direction) \times 80 (frequency direction). Then, hidden representations were duplicated to adjust time resolution. The previous 400 samples and hidden representations obtained from the input network were fed into an output network. The output network was composed of three 256-unit Uni-directional LSTMs.

Frame shift, frame length, and FFT size used to obtain the STFT spectra of a neural network's outputs were 1, 400, and 512, respectively. Voiced/Unvoiced flags were extracted by RAPT [17]. Mini-batches were created, each from 120 randomly selected speech segments. Each mini-batch contained a total of 15 s speech waveform samples (each speech segment equaled 0.125 s). We used the Adam optimizer [18], and the number of updating iteration was 100k.

We trained four speech waveform models with the proposed network architecture. The difference among these four models was the loss function used for model training. Eq. (2) and Eq. (13) with three types of $\alpha_{t,n}$ were used as loss functions for training the four models. For comparison, the WaveNet was trained by using 80-dim log-mel spectrograms and 1,024 mu-law discrete waveform samples as input and output training data. The network architecture of the WaveNet was the same as that used in [12]. The WORLD [19] was also used as a baseline signal-processing-based vocoder. Spectral envelopes and aperiodicity measurements obtained by utilizing the WORLD were converted to 59-dim mel-cepstrum and 21-dim band aperiodicity. The total dimensions of a WORLD acoustic feature was 82 (60 (mel-cepstrum) + 1 (voiced/unvoiced flag) + 1 (lf0) + 21 (band aperiodicity)). In total, we used six vocoders (the four proposed models, the WaveNet, the WORLD) in the experiment.

²Synthetic speech samples and codes for model training can be found at <https://nii-yamagishilab.github.io/TSNetVocoder/index.html> and <https://github.com/nii-yamagishilab/TSNetVocoder>, respectively.

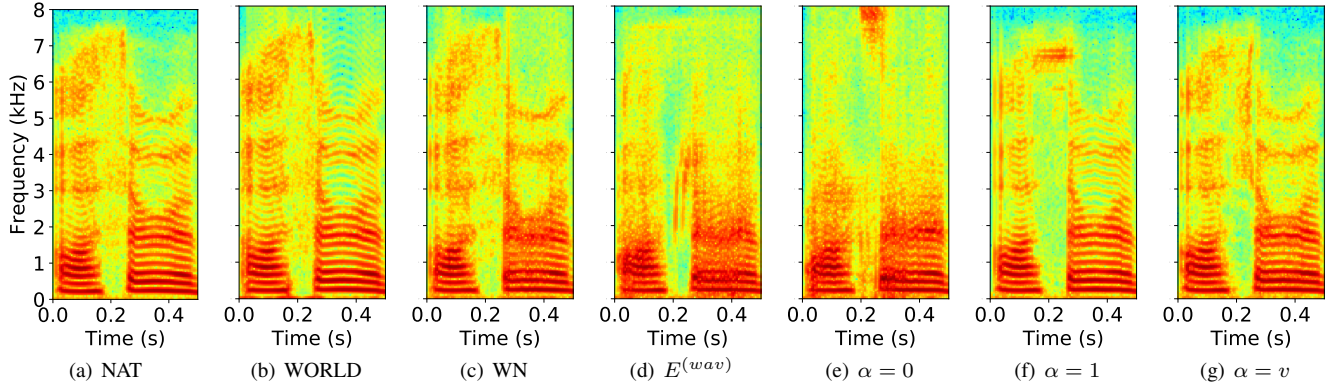


Fig. 3. Spectrograms of analysis-by-synthesis speech waveform segments are shown. Here, NAT and WN are natural and the WaveNet. Spectrograms of the synthetic speech obtained by using the proposed models are shown in (d–g). Eq. (2) and Eq. (13) with three types of α are used as loss functions for model training, respectively.

We evaluated analysis-by-synthesis (AbS) systems and text-to-speech (TTS) synthesis systems based on the six vocoders. For TTS synthesis systems, acoustic models that convert linguistic features to acoustic features (i.e., 80-dim log-mel spectrogram or 82-dim WORLD acoustic features) were separately trained. Deep auto-regressive (DAR) models [15] were used as acoustic models. From the TTS experimental results, we can see the robustness of the proposed waveform model against the degraded input features generated by the acoustic models.

4.2. Experimental results

4.2.1. Spectrogram

Fig. 3 shows spectrograms of analysis-by-synthesis speech waveform segments. There is an unvoiced part around 0.2 seconds. We can see from Fig. 3 (d) and (e) that the proposed models trained by using $E^{(wav)}$ and $E^{(sp)}$ without the phase spectral loss function (i.e., $\alpha = 0$) generated noisy spectrograms. Also, it can be seen from Fig. 3 (f) that large value amplitude spectra are observed around 7 kHz in the unvoiced part, whereas they are not observed in the natural spectrogram. Such artifacts are not observed in the spectrogram shown as Fig. 3 (g). These results indicate that training a proposed model by using the amplitude and phase spectral loss functions is adequate and adjusting the weight parameter α by using the voiced/unvoiced flag further improves the performance.

Both spectrograms of the WaveNet and the proposed model trained by adjusting $\alpha_{t,n}$ by using the voiced/unvoiced flags (i.e., Fig. 3 (c) and (g)) are similar to the natural one, although the detailed spectral structures are changed.

4.2.2. Subjective evaluation result

The subjective evaluation was conducted using 158 crowd-sourced listeners. Natural samples and samples synthesized from the 12 systems were evaluated. The number of synthetic samples was 650 (13 systems \times 50 test sentences). Participants evaluated speech naturalness on a five-point mean opinion score (MOS) scale. Each synthetic sample was evaluated 40 times, giving a total of 26,000 data points. Thanks to the large number of data points, differences between all combinations of evaluated systems are statistically significant (i.e., $p < 0.05$).

First, among the proposed models, those trained together with the phase spectral loss outperformed the others. Using not only amplitude spectra but also phase spectra to calculate loss is useful

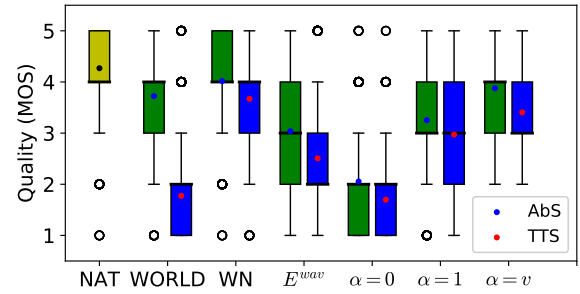


Fig. 4. Box plots on naturalness evaluation results. Blue and red dots represent the mean results of analysis-by-synthesis and text-to-speech synthesis systems, respectively.

for training a neural speech waveform model. The proposed model trained by adjusting $\alpha_{t,n}$ by using the voiced/unvoiced flags obtained the best score among the proposed models.

Second, it can be seen from Fig. 4 that the best performance of the proposed model (i.e., $\alpha = v$) is better than that of the WORLD. In the WORLD, the TTS result is drastically decreased from the AbS result. On the other hand, we can see that the proposed model with the best configuration (i.e., $\alpha = v$) is robust against acoustic features predicted from the acoustic model.

Finally, compared with the WaveNet, the best performance of the proposed models (i.e., $\alpha = v$) is slightly worse. But note that the number of parameters of the proposed model (1.8M) is less than that of the WaveNet (2.3M). Although we need to improve loss functions and network architecture to achieve comparable performance with the WaveNet, it is obvious that the proposed model achieved high-performance speech waveform modeling.

5. CONCLUSION

We proposed a new STFT spectral loss to train a high-performance speech waveform model directly. We also presented a simple network architecture for the model, which is composed of unidirectional LSTMs and an auto-regressive structure. Experimental results showed that the proposed model can synthesize high-quality speech waveforms.

This is a part of our sequential work. In our next paper [13], we will show that the above model can be improved further to achieve performance comparable with the WaveNet. Our other future work includes training based on other time-frequency analysis such as modified discrete cosine transform.

6. REFERENCES

- [1] Shinji Takaki, Hirokazu Kameoka, and Junichi Yamagishi, "Direct modeling of frequency spectra and waveform generation based on phase recovery for DNN-based speech synthesis," in *Proc. Interspeech*, 2017, pp. 1128–1132.
- [2] Aäron van den Oord, Sander Dieleman, Heiga Zen, Karen Simonyan, Oriol Vinyals, Alex Graves, Nal Kalchbrenner, Andrew W. Senior, and Koray Kavukcuoglu, "Wavenet: A generative model for raw audio," *CoRR*, vol. abs/1609.03499, 2016.
- [3] Akira Tamamori, Tomoki Hayashi, Kazuhiro Kobayashi, Kazuya Takeda, and Tomoki Toda, "Speaker-dependent WaveNet vocoder," in *Proc. Interspeech*, 2017, pp. 1118–1122.
- [4] Jonathan Shen, Ruoming Pang, Ron J Weiss, Mike Schuster, Navdeep Jaitly, Zongheng Yang, Zhifeng Chen, Yu Zhang, Yuxuan Wang, Rj Skerrv-Ryan, et al., "Natural TTS synthesis by conditioning WaveNet on Mel spectrogram predictions," in *Proc. ICASSP*, 2018, pp. 4779–4783.
- [5] Xin Wang, Jaime Lorenzo-Trueba, Shinji Takaki, Lauri Juvela, and Junichi Yamagishi, "A comparison of recent waveform generation and acoustic modeling methods for neural-network-based speech synthesis," in *Proc. ICASSP*, 2018, pp. 4804–4808.
- [6] Aaron van den Oord, Yazhe Li, Igor Babuschkin, Karen Simonyan, Oriol Vinyals, Koray Kavukcuoglu, George van den Driessche, Edward Lockhart, Luis C Cobo, Florian Stimberg, et al., "Parallel WaveNet: Fast high-fidelity speech synthesis," *arXiv preprint arXiv:1711.10433*, 2017.
- [7] Wei Ping, Kainan Peng, and Jitong Chen, "Clarinet: Parallel wave generation in end-to-end text-to-speech," *arXiv preprint arXiv:1807.07281*, 2018.
- [8] Pejman Mowlaee, Rahim Saeidi, and Yannis Stylianou, "INTERSPEECH 2014 special session: Phase importance in speech processing applications," *Interspeech*, pp. 1623–1627, 2014.
- [9] Daniel D Lee and H Sebastian Seung, "Algorithms for non-negative matrix factorization," in *Proc. NIPS*, 2001, pp. 556–562.
- [10] P. Smaragdis, B. Raj, and M. Shashanka, "Supervised and semi-supervised separation of sounds from single-channel mixtures," *Proceedings of 7th Int. Conf. Ind. Compon. Anal. Signal Separat.*, pp. 414–421, 2007.
- [11] M. C. Jones and Arthur Pewsey, "A family of symmetric distributions on the circle," *Journal of the American Statistical Association*, vol. 100, no. 472, pp. 1422–1428, 2005.
- [12] Jaime Lorenzo-Trueba, Fuming Fang, Xin Wang, Isao Echizen, Junichi Yamagishi, and Tomi Kinnunen, "Can we steal your vocal identity from the internet?: Initial investigation of cloning obamas voice using gan, wavenet and low-quality found data," in *Proc. Odyssey 2018 The Speaker and Language Recognition Workshop*, 2018, pp. 240–247.
- [13] Xin Wang, Shinji Takaki, and Junichi Yamagishi, "Neural source-filter-based waveform model for statistical parametric speech synthesis," *Submitted to ICASSP 2019*, 2019.
- [14] Ronald J Williams and David Zipser, "A learning algorithm for continually running fully recurrent neural networks," *Neural computation*, vol. 1, no. 2, pp. 270–280, 1989.
- [15] Xin Wang, Shinji Takaki, and Junichi Yamagishi, "Autoregressive neural f0 model for statistical parametric speech synthesis," *IEEE/ACM Transactions on Audio, Speech, and Language Processing*, vol. 26, no. 8, pp. 1406–1419, 2018.
- [16] J. Kominek and A. W. Black, "The CMU arctic speech databases," *Fifth ISCA Workshop on Speech Synthesis*, 2004.
- [17] David Talkin, "A robust algorithm for pitch tracking (rapt)," *Speech coding and synthesis*, vol. 495, pp. 518, 1995.
- [18] Diederik P. Kingma and Jimmy Ba, "Adam: A method for stochastic optimization," *CoRR*, vol. abs/1412.6980, 2014.
- [19] Masanori Morise, Fumiya Yokomori, and Kenji Ozawa, "WORLD: A vocoder-based high-quality speech synthesis system for real-time applications," *IEICE Trans. on Information and Systems*, vol. 99, no. 7, pp. 1877–1884, 2016.